



E N G I N E E R I N G

I N N O V A T I N G

A N D B U I L D I N G T H E

**F U T U R E**

The logo for FUTURAMIC, featuring the word "FUTURAMIC" in a bold, sans-serif font. A stylized graphic element, resembling a red and white swoosh or a stylized 'F', is positioned to the left of the text.

---

## ABOUT FUTURAMIC

Founded in 1955, Futuramic built its reputation on a commitment to quality, on time delivery, customer service, and competitive prices. As a full-service design and build company, we specialize in taking a customer's requirements and processing them through design, build, inspection, and installation. Customers benefit from our continuous upgrade of computers, NC machines, CMM inspection equipment, and utilization of our experience within the engineering/build processes.

Futuramic is committed to the growth, and development, of its associates. We have partnered with Macomb Community College on an apprenticeship program since 1971. This program is continuously reviewed to keep it abreast of the latest technologies. To further associate development after the apprenticeship program Futuramic set up extensive in-house training courses. These are specifically designed to ensure that all of our associates are aware of recent developments and processes within the industry. These programs and courses help to create a work environment that is conducive to continuous improvement, high employee retention, and increased productivity. We are able to meet, or exceed, your expectations for quality and delivery as a result of our commitment and dedication.

---

## CERTIFICATIONS

### ISO 9001:2008 AND AS 9100C CERTIFIED IN ACCORDANCE WITH AS9104A

This is the most universal and globally recognized quality system today.

### ITAR REGISTRATION

Achieving this registration is evidence of our commitment to comply with policies that control the export and import of defense-related articles and services.



## ENGINEERING

54,750 sq ft (5,086 sqm) of engineering space

2,000 sq ft (185 sq m) of R&D

Utilizing All Major Operating Systems (CATIA, Unigraphics, AutoCAD)

Program Management Services

Offline Inspection Programming

Change Management Controls

Standard Components Library

IT Management

100+ Seat Capacity



## MANUFACTURING

480,000 sq ft (44,595 sq m)  
of Manufacturing and Assembly Space

Program Management Services

Autoclave Capabilities for Tooling  
and Part Manufacture

On-Floor CAD and Programming  
Capabilities

Palletized Automated Machining  
Centers

30+ Machine Tools

Direct Link NC Programming

EDM Capabilities

Lean Build Cells

Fully Craned Facility



## FABRICATION

245,000 sq ft (4,180 sq m)  
Dedicated to Fabrication

Certified Welders and Fitters for  
Aluminum, INVAR, Stainless, Steel,  
and Other Specialty Metals

Robotic Welding Cell

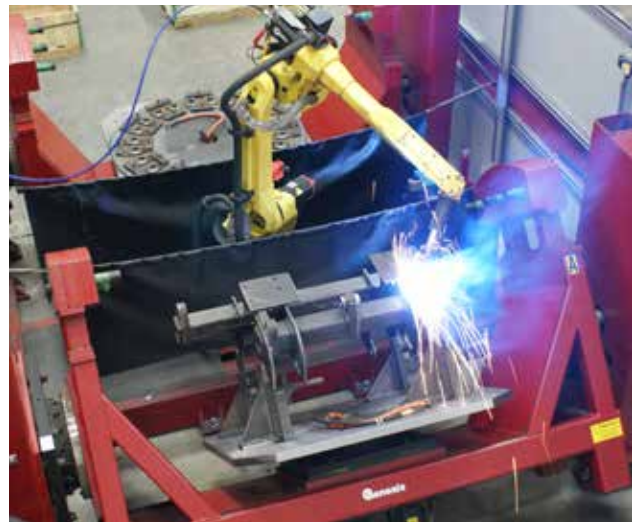
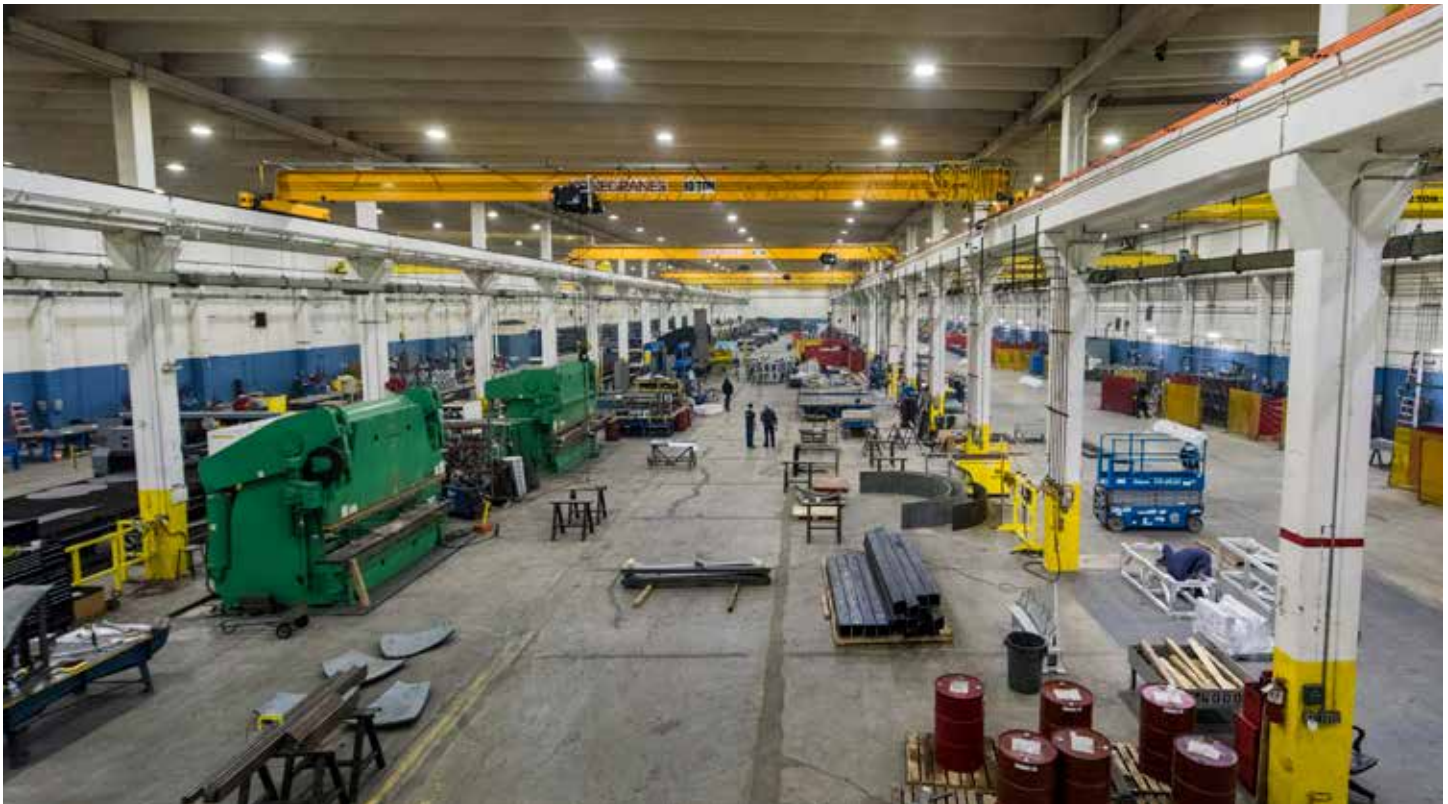
CAD Controlled Burnouts

Water Jet Services

Large Inventory of Materials

Grinding Services

Common IT Server with  
Engineering and Manufacturing



## INSPECTION

12 Laser Trackers

3D Software Capabilities  
(CAPPS, AVAIL, PC-DMIS)

Third Party Certification Services

8 Coordinate Measuring Machines  
(CMMs) in Various Sizes

PART, GR, GR&R and R&R Services

Off-sight Inspection, Installation and  
Commissioning Services



## INSTALLATION

Re-Assemble

Re-Certify

Onsite Training

Laser Tracker and Third-Party Certification

Self-sufficient Mobile Machine Trailer with Two Power Source Options:

- Natural Gas/Flexible Gas Generator
- Plug-in electrical power





### **BUILD**

24680 Gibson  
Warren, MI 48089 USA  
586.758.2200

### **ENGINEERING**

24727 Gibson  
Warren, MI 48089 USA  
586.497.8850

### **FABRICATION**

20101 Hoover St  
Detroit, MI 48205 USA  
313.264.1300

### **ENGINEERING WEST**

22122 17th Ave  
Ste E-221  
Bothell, WA 98021 USA  
454.420.1077